



THE<sup>®</sup>  
ITALIAN  
LAB



oakio<sup>®</sup>

DESIGNED FOR LIVING  
**BUILT TO LAST**

Manufacturer of Eco-Friendly Wood Plastic Composites Product



Wood Plastic Composite

# Table of Contents

## Discover More

02-04 Who We Are

## Products

05-12 Matshield Decking  
13-14 Clips and Fascia & Joist  
15-16 Pedestal  
17-22 Proshield Cladding  
23 Fixing Methods  
24-28 Proshield Profiles

WHO WE ARE

# Designed for living Built to last

The Italian Lab<sup>®</sup> - Oakio<sup>®</sup> WPC products have the look and feel of traditional wood, with the added strength, durability and sustainability of a composite material

---

## We Know WPC!

---

The Italian Lab<sup>®</sup> - Oakio<sup>®</sup> WPC is backed by 25-year limited residential warranty on Proshield, Matshield Collection. That is how we fulfill our mission of delivering products to help you create the most enduring, durable and enjoyable outdoor living spaces. We are also proud of our continuous conservation and sustainability efforts. The Italian Lab<sup>®</sup> - Oakio<sup>®</sup> WPC is made from up to 95 percent recycled materials, saving tens of thousands of trees each year. The Italian Lab<sup>®</sup> - Oakio<sup>®</sup> is the industry leader in high-performance wood plastic composite building materials.



Proshield Collection  
Matshield Collection

 Designed in ITALY

 Made in China

 THE<sup>®</sup>  
ITALIAN  
LAB

 oakio

# Environmental Philosophy

Oakio® has always been at the forefront of the green building industry and since our inception in 2009, we have been consistently improving our commitments to the environment.



## FSC

Forest Stewardship Council - FSC certification ensures that products come from responsibly managed forests that provide environmental, social and economic benefits. FSC products are optional, standard products are not made by FSC.



## LEED

Qualified for LEED Points, up to 95% of the raw materials used to manufacture Oakio® products are sourced within 300 km of our manufacturing facility.



## REACH

Oakio® products are all REACH certified which indicates conformity with health, safety and environmental protection standards for products sold within the European Economic Area.



## ISO

Our ISO9001 and ISO14001 certification guarantees that our clients get only the best products and service and that the quality of what we offer is constantly and consistently improved.



## CE

Oakio® products are all CE certified which indicates conformity with health, safety, and environmental protection standards for products sold within the European Economic Area.

WHO WE ARE

# Let's build to last

Craft your WPC products as beautiful and lasting as the memories you'll create on it.

---

## Board-To-Board Colour Variations and touch different

---

At The Italian Lab® - Oakio® we go to extensive lengths to make our products reflect all of the beauty and nuance of nature. Some of our collections include solid colours while others bear subtle to more pronounced highlights to closely resemble the characteristics of real wood. This intended effect is known as colour variegation. To achieve this, we use various pigments and stains to replicate the features found in traditional lumber. The degree of variegation will vary from board to board. For co extrusion products, we create different surface treatment, which includes thicker cap, soft cap, matte surface, strengthen scratch resistant and so on.

### Proshield Collection

This is the second generation of WPC products. Designed to reflect the true tones of natural wood, this is our most uniquely variegated line which includes cascading colours. The artisanal, hand-scraped texture has a refined appearance matched with the most advanced design technology available.



# Matshield Collection

The Italian Lab® - Oakio® Matshield circle hollow decking in walnut colour









# Matshield Collection

Matshield is the brand new technology that brings you matte surface of outdoor decking. What is more, it is fire resistant product, which stands out from the crowd. As a result, Matshield achieves superior fire resistance to any other co-extruded decking on the market.

It is fire resistant to Class B according to En13501, the highest fire resistant level for composite materials in the world at the moment. The standard includes seven classification levels, from A1 to F, with A1 representing the highest level of performance and F representing the lowest level.

Matshield achieves Class B. It is colour fade resistant, strength load resistant, stain resistant and also highly slip resistant.

- All the advantages of Iniwood and more
- Fire resistant to Class B according to Europe standard
- Ultra scratch resistant
- Matte surface with luxury hard wood appearance
- No stains, fades, mold or mildew
- 25 years residential warranty





## Most Fire-resistant

Fire-resistance level of Matshield decking reaches Class Bfl-S1-D0 according to European standard EN13501, the fire test to building material. Class B is the highest level wood plastic composite decking can reach. Environmentally friendly fire retardant is carefully selected and added while the shield and core are extruded together.

▼ Combustion Test



▼ The flame goes out when the musket is stopped.



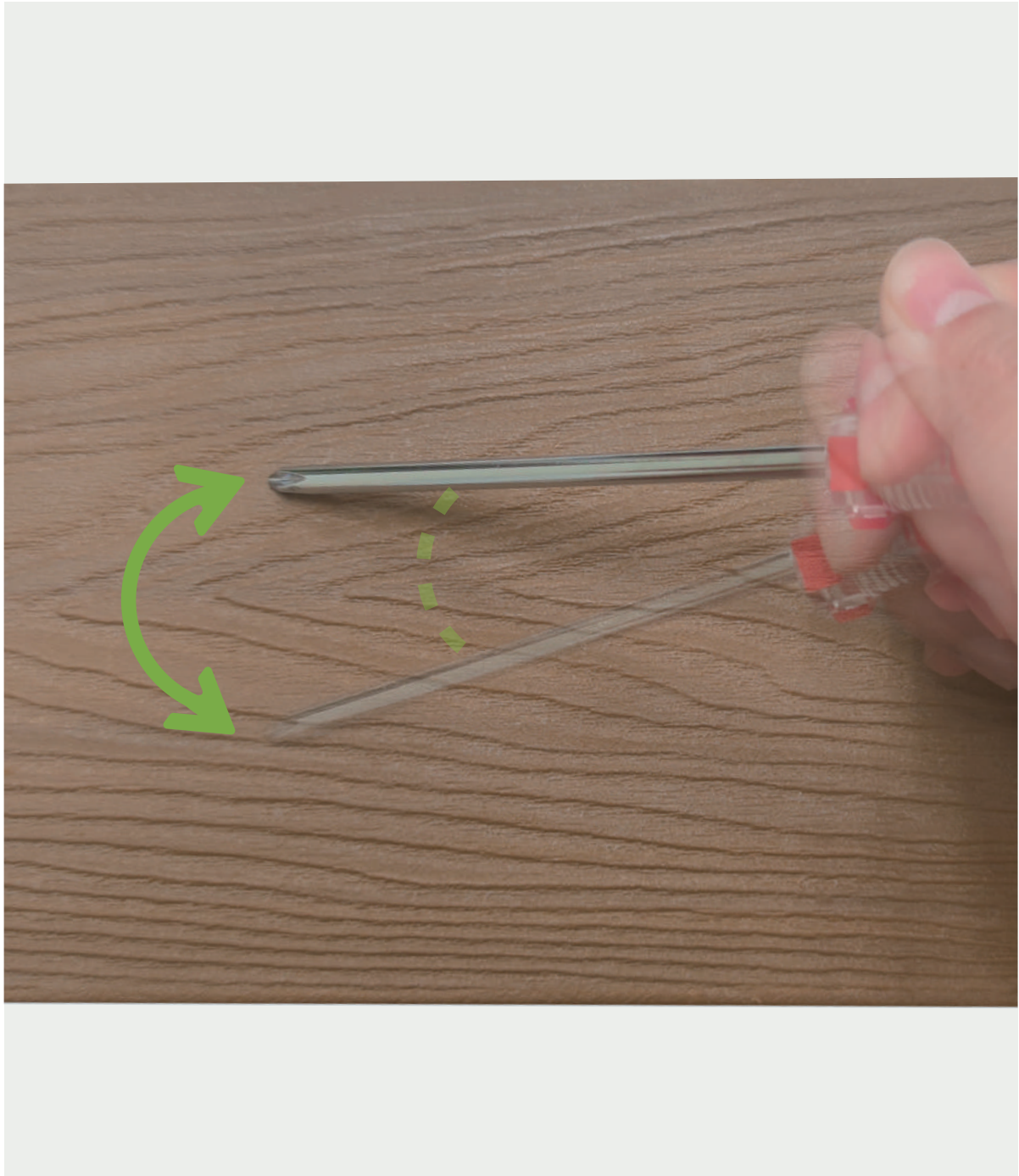
▼ The flame is automatically extinguished within 2 seconds on Matshield decking.





## Extremely Scratch-resistant

High performance in scratch resistance, Matshield decking is much harder than any other decking on the market to prevent scratch, no burden on regular maintenance.





# Matshield decking profile and colour options

Matshield is inspired by the exquisite Colours found in nature. A remarkable range of shades, tones and textures can complement any living space.

---

## Profile Choices

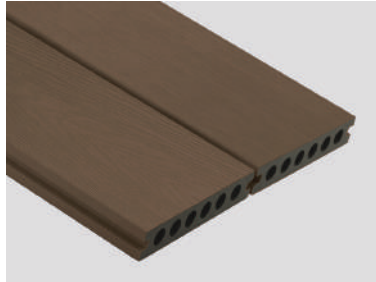
---



**MPD01**



Size: 140x22 mm  
Joist span: 400 mm  
Application: Commercial use



**MPD02**



Size: 139x23 mm  
Joist span: 350 mm  
Application: Residential use

---

## Colour Choices

---



**Pomegranate**

Code: MC01



**Walnut**

Code: MC02



**Panther**

Code: MC03



**Whale**

Code: MC04



**Goral**

Code: MC05



**Cinnamon**

Code: MC06

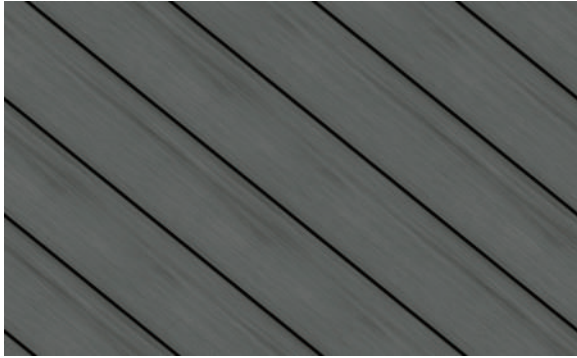


These beautifully natural textures offer effortless cleaning, complete ease-of-maintenance and the most advanced moisture, fade resistance technology available today. What is more, anti-microbial properties make all surfaces germ resistant and hygienic, plus their slip resistance make them barefoot friendly and safe for the whole family.

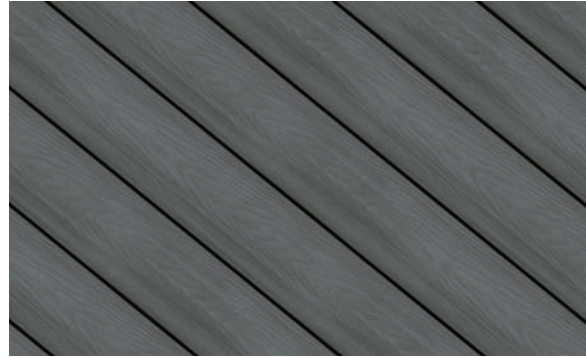
---

### Texture Options

---



MW01



MW02

---

### Add-in Options

---

The above profiles, colours and textures are our standard ones, while The Italian Lab - Oakio provides fully customization, contact The Italian Lab - Oakio for more at [www.theitalianlab.com](http://www.theitalianlab.com) / [www.oakio.com](http://www.oakio.com).





The Italian Lab® - Oakio® Matshield circle hollow decking in panther colour

# CLIPS

The Italian Lab® - Oakio® decking is designed for professionals and also perfect for novices. The Italian Lab® - Oakio® clip system enables simplified installation of your deck boards.

## Fixing Methods

### STARTER CLIPS



Code: AS04



\* Material: Stainless steel 304

### Expansion clips



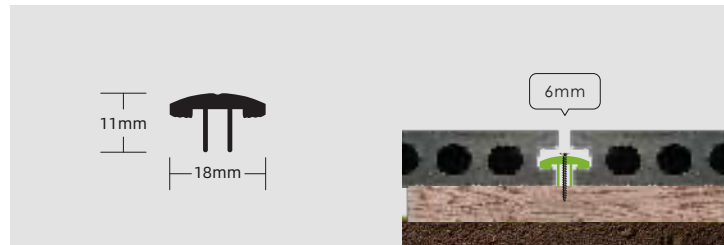
Code: AS01



\* Material: Stainless steel 304



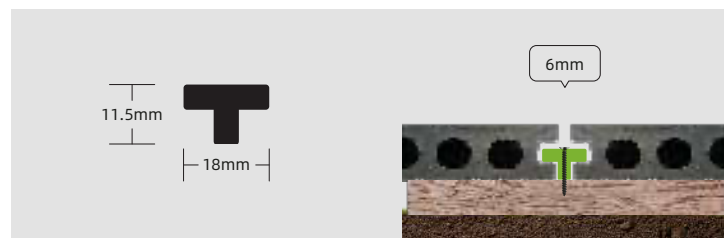
Code: AS07



\* Material: Aluminum



Code: AS10



\* Material: Plastic



# Fascia

The Italian Lab® - Oakio® decking is designed for professionals and also perfect for novices. The Italian Lab® - Oakio® clip system enables simplified installation of your deck boards.

---

## Fixing Methods

---



**Proshield Fascia**

Code: PPF19  
Size: 138x15 mm



**Proshield Fascia**

Code: PPF20  
Size: 138x15 mm



**Proshield Fascia - U Channel**

Code: IPF15  
Size: 96x76 mm



**Proshield Fascia**

Code: PPF01  
Size: 71x11 mm



**Proshield Fascia**

Code: PPF02  
Size: 140x11 mm



**Proshield Fascia**

Code: PPF03  
Size: 50x50 mm



**Matshield Fascia**

Code: MPF01  
Size: 71x11 mm

# Pedestal



The Italian Lab® - Oakio® Proshield circle hollow decking in westminster colour



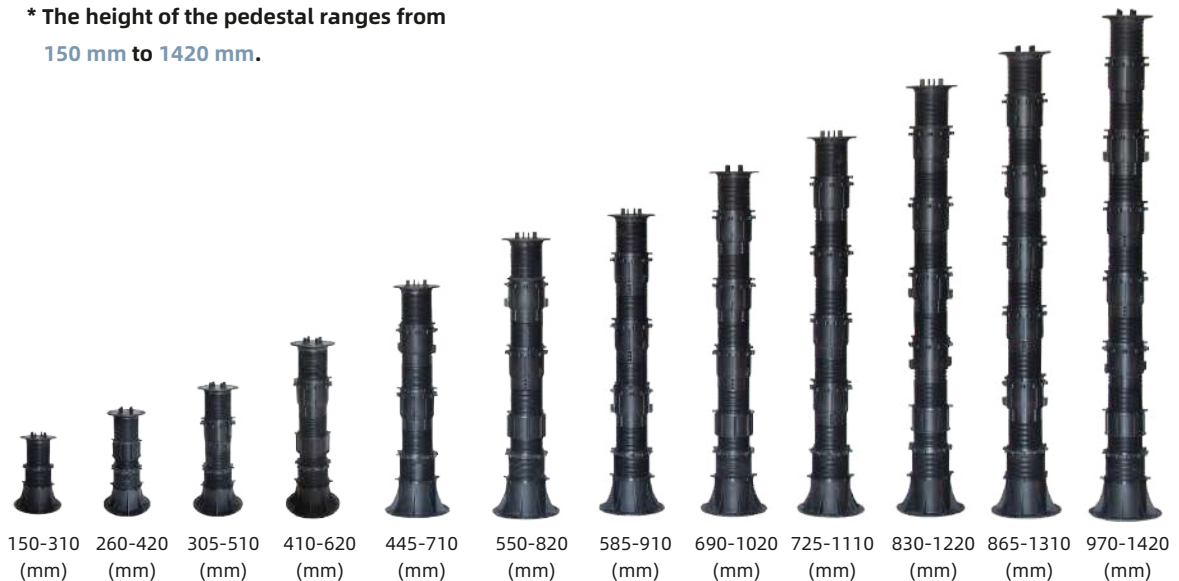
# Pedestal

The Italian Lab® - Oakio® adjustable support pads are designed for decking and paving areas where very high clearance from the ground is required, or where minor changes to the final height is needed. Adjustable support pads are easy to use and are the best way to ensure a top quality finish on roofs, balconies and terraces.

## Height Choices



\* The height of the pedestal ranges from **150 mm to 1420 mm.**



# Proshield Cladding



The Italian Lab® - Oakio® Proshield scollop cladding in lake baikal colour





# Proshield Cladding

Proshield Collection is the second generation of Iniwood Collection with Iniwood materials (35% plastic resin, 55% oak wood fiber and 10% additive) as the core and golf ball material as the shield.

This means that it has an advanced premium shield encasing on all four sides around its inner core. Unlike most of the co-extrusion cladding on the market, Proshield cladding is capped by golf material instead of only PE.

- All the advantages of Iniwood and more
- Features a variety of unique variegated colour and wood grain patterns
- Ultra durable
- No stains, fades, mold or mildew
- Increased scratch resistance
- 25 years residential warranty

## Profile Choices



### PPC01

Size: 140x12 mm  
Joist span: 350 mm



### PPC02

Size: 156x21 mm  
Joist span: 350 mm



### PPC10

Size: 176x26 mm  
Joist span: 350 mm



### PPC12

Size: 138x10 mm  
Joist span: 350 mm



### PPF21 - Corner

Size: 79x79 mm  
Joist span: 350 mm



### PPC03

Size: 219x26 mm  
Joist span: 350 mm



# Proshield Colour and finisher options

These beautiful, natural textures offer effortless cleaning, no maintenance and the most advanced moisture and fade resistance technology available.

---

## Colour Choices

---



**Parthenon**

Code: PC01



**Angkor**

Code: PC02



**Petra**

Code: PC03



**Westminster**

Code: PC04



**Black Beach**

Code: PC05



**Chichen Itza**

Code: PC06



**Taj Mahal**

Code: PC07



**Lake Baikal**

Code: PC08



**Colosseum**

Code: PC09



**Pyramids**

Code: PC10



**Valensole**

Code: PC11



**Potala Palace**

Code: PC12

## Magnificently durable Proshield Textures

Proshield in its aesthetics and resilient in its wear, Proshield is available in a variety of different texture options that incorporate Proshield wood grain textures and mimic the look and feel of exotic hardwoods.

These beautifully natural textures offer effortless cleaning, complete ease-of-maintenance and the most advanced moisture, fade resistance technology available today. What is more, anti-microbial properties make all surfaces germ resistant and hygienic, plus their slip resistance make them barefoot friendly and safe for the whole family.

---

### Texture Options

---



PW01





**The Italian Lab® - Oakio® Proshield solid cladding in westminster colour**



**The Italian Lab® - Oakio® Proshield scallop cladding in westminster colour**



**The Italian Lab® - Oakio® Proshield solid cladding in westminster colour**





**The Italian Lab® - Oakio® Proshield cladding in westminster colour**



**The Italian Lab® - Oakio® Proshield cladding in westminster colour**



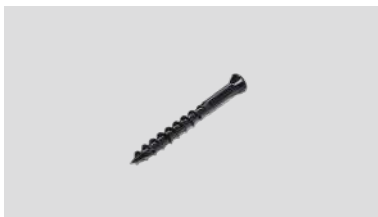
**The Italian Lab® - Oakio® Proshield cladding in westminster colour**



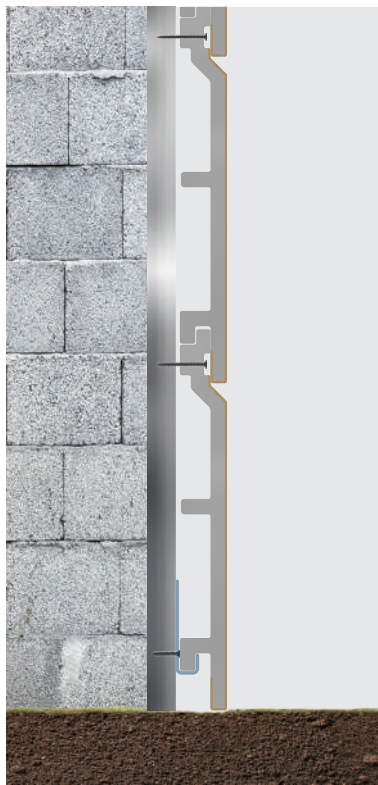
# Fixing Methods

Clips and screws are the main accessories for cladding.  
Visit [www.oakio.com](http://www.oakio.com) for further information.

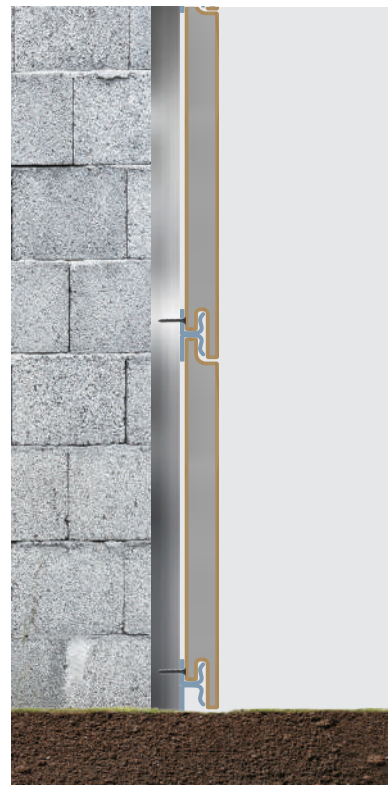
## Fixing Methods



Code: AM04



Code: AS04



Code: AS13

# Proshield Profiles

Our range of Proshield profiles is made up of five different sizes that allow to create numerous architectural elements, such as sunscreens, pergolas, railings, gates, partitions elements, decorative elements. Our profiles are also supplied with end caps. On request it is also possible to create customized profiles.

---

## Proshield Profiles

---



**Proshield Profiles**

Code: PSM04  
Size: 60x42 mm



**Proshield Profiles**

Code: PSM05  
Size: 100x52 mm



**Proshield Profiles**

Code: PSM06  
Size: 120x62 mm



**Proshield Profiles**

Code: PSM07  
Size: 172x62 mm



**Proshield Profiles**

Code: PSM08  
Size: 96x76 mm



**Proshield Profiles - L/C Profile**

Code: PSM09  
Size: 249x60 mm



# Proshield Profiles and finisher options

These beautiful, natural textures offer effortless cleaning, no maintenance and the most advanced moisture and fade resistance technology available.

---

## Colour Choices

---



**Parthenon**

Code: PC01



**Angkor**

Code: PC02



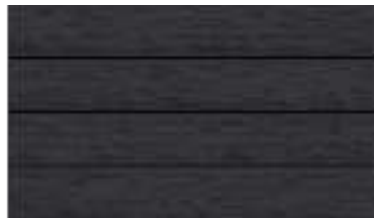
**Petra**

Code: PC03



**Westminster**

Code: PC04



**Black Beach**

Code: PC05



**Chichen Itza**

Code: PC06



**Taj Mahal**

Code: PC07



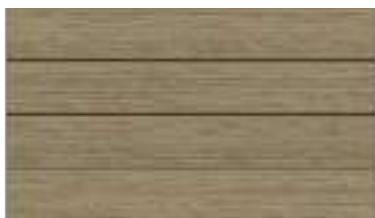
**Lake Baikal**

Code: PC08



**Colosseum**

Code: PC09



**Pyramids**

Code: PC10



**Valensole**

Code: PC11



**Potala Palace**

Code: PC12

## Magnificently durable Proshield Textures

Proshield in its aesthetics and resilient in its wear, Proshield is available in a variety of different texture options that incorporate Proshield wood grain textures and mimic the look and feel of exotic hardwoods.

These beautifully natural textures offer effortless cleaning, complete ease-of-maintenance and the most advanced moisture, fade resistance technology available today. What is more, anti-microbial properties make all surfaces germ resistant and hygienic, plus their slip resistance make them barefoot friendly and safe for the whole family.

---

### Texture Options

---



PW01

---

### Ending Cap

---



#### Ending Cap

Code: AP08  
Size: 60x42 mm

#### Ending Cap

Code: AP09  
Size: 100x52 mm

#### Ending Cap

Code: AP10  
Size: 120x62 mm

#### Ending Cap

Code: AP12  
Size: 39x52 mm

#### Ending Cap

Code: AP13  
Size: 50x62 mm

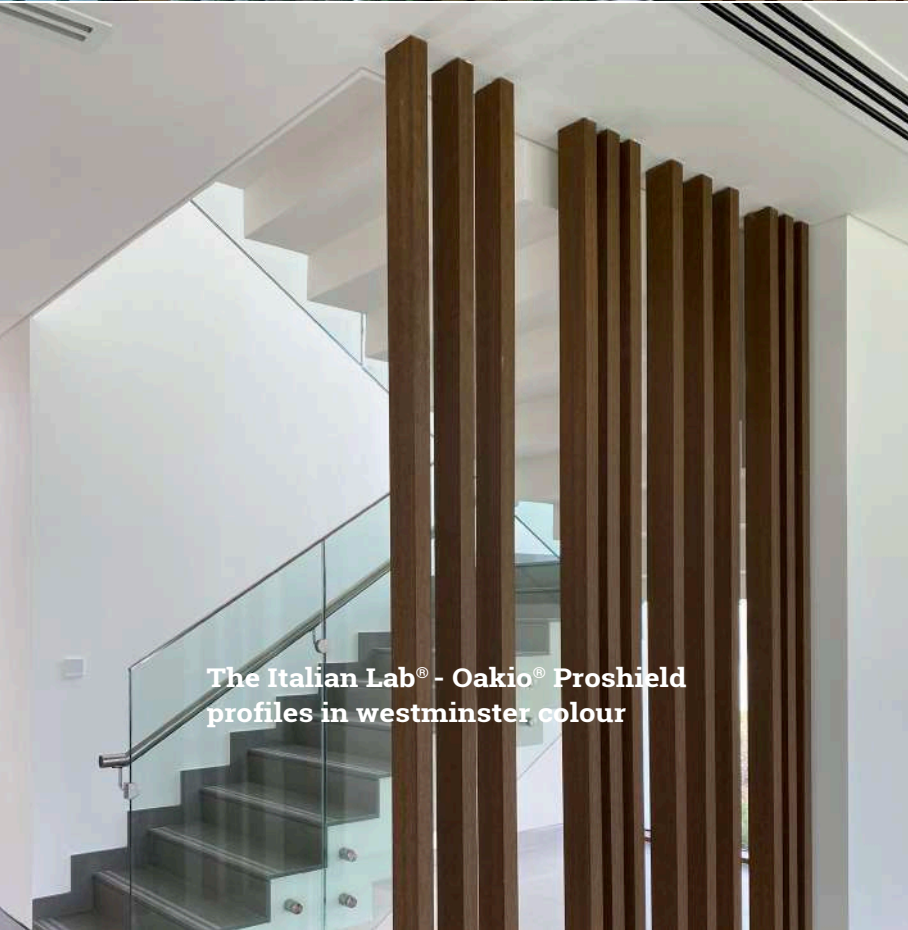




**The Italian Lab® - Oakio® Proshield profiles  
in westminster colour**



The Italian Lab® - Oakio® Proshield profiles in westminster colour



The Italian Lab® - Oakio® Proshield profiles in westminster colour



The Italian Lab® - Oakio® Proshield profiles in westminster colour





THE  
ITALIAN  
LAB



**Italian Lab s.r.l**

Via Bonisiolo, 16/B, 31021 Mogliano Veneto (TV), Italia

Tel: +39 041 865 5264

Web: [www.theitalianlab.it](http://www.theitalianlab.it)

Email: [info@theitalianlab.it](mailto:info@theitalianlab.it)

FIND US ON



For more information, visit [www.theitalianlab.it](http://www.theitalianlab.it)

SPONSORED BY:  **Alakat**