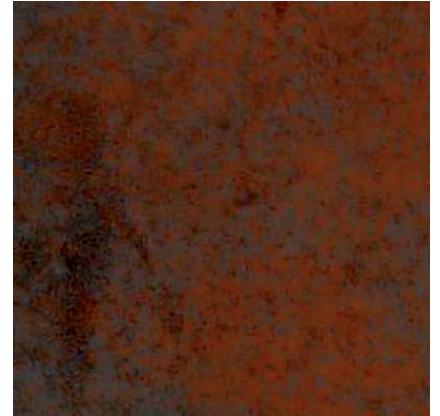


Corten steel



Thanks to the process of oxidation and maturation that characterizes it, **The Corten Steel** is considered a live material, which may vary over time, in shades and hues, depending on the shape of the object, the position in which it is installed and according to the cycles of weathering which the object undergoes.

Warning: the average period where the natural cycle of maturation of corten stabilizes, giving the material a dark brown shade typical of oxidized corten, is about 12/18 months in the presence of suitable weather conditions. During this stage of maturation, the corten may leak oxide (washout), which may stain surfaces where the products are located. For corten, this is considered a natural and physiological behavior of the material.

To reduce the loss of oxide, The Italian Lab use a special ANTI-WASHOUT treatment which may be requested by the customer, at extra cost: this treatment does not completely block the losses, but decreases significantly the

oxide leak, giving the product a darker appearance and finish. As indicated above, the laying of corten products on valuable or porous surfaces (e.g. marble, granite, etc.) must be very carefully evaluated, also in the case of Anti-washout treatment: in these cases it may be advisable to use, alternatively, galvanised and painted steel with the corten colour.

Also, in the vicinity of the sea, the violent assault of salty air, can lead to the formation of oxides on the surfaces that result in the appearance/colour looking different to normal. This does not affect good mechanical strength of the material.