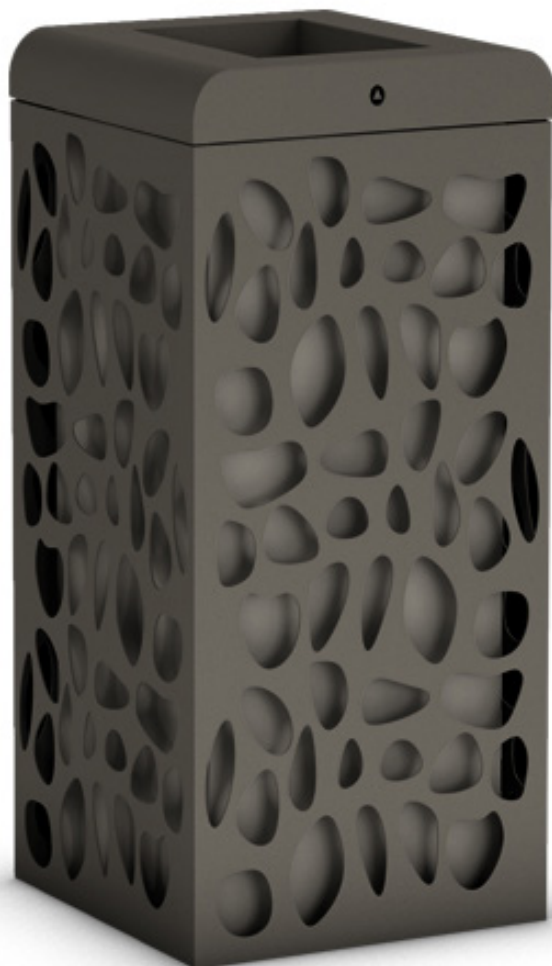


CODE: UL-CST-022

## Litter bins

CLAPS

 THE<sup>®</sup>  
ITALIAN  
LAB



**Dimensions:** L 400, W 400, H 870mm  
**Capacity:** 100 L

The CLAPS litter bin is rectangular shaped and it has a laser cut decorative pattern called “claps”.

It is made of 20/10 thick cold galvanized and polyester powder coated steel.

Inside there is a container made of 6/10 thick zinc-coated polyester powder coated steel with 2 slotted holes that serve as handles. It has an elastic band, diam. 10

mm, to waste bag fastening. The cover is made of 40/10 thick cold galvanized and polyester powder coated steel. The lid is fixed to the structure by two solid hinges.

Ground fixing is with suitable bolts (not supplied) on 4 10-mm holes.

**Optional:** ashtray, lock with triangular key.

