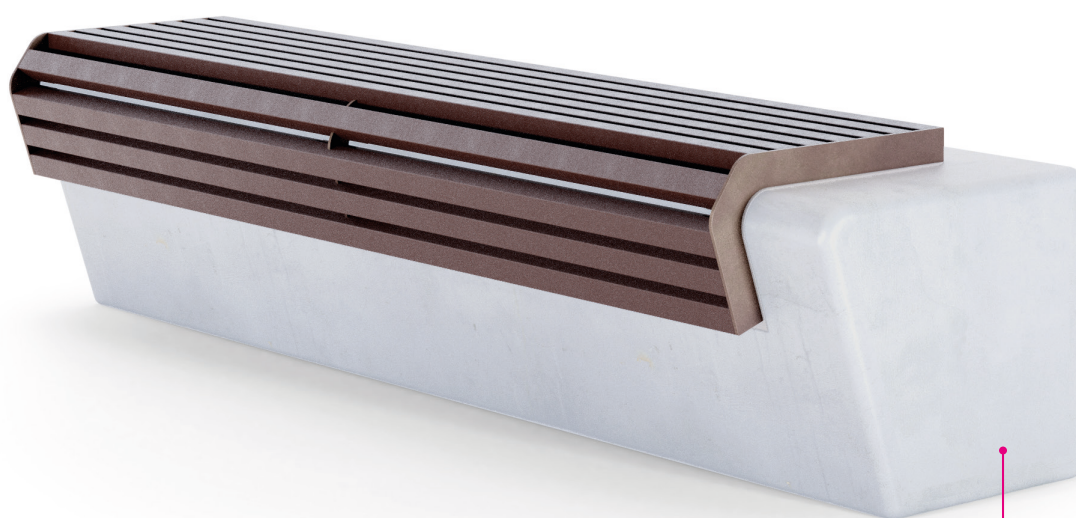


CODE: UL-PNC-005-PR

## Benches

FLAT 1 seat RECY

**THE**  
ITALIAN  
LAB



MONOLITHE  
CODE UL - PNC - 043

**Dimensions:** L 1800, W 450, H 540 mm

The FLAT 1 bench is made of three solid 10-mm steel plates, with holes to attach the recycled plastic slats 40x40 mm.

The plates are then cold galvanized and polyester powder coated.

The bend angle of the lower part can be customized for the application of FLAT 1 on existing walls or seats.

