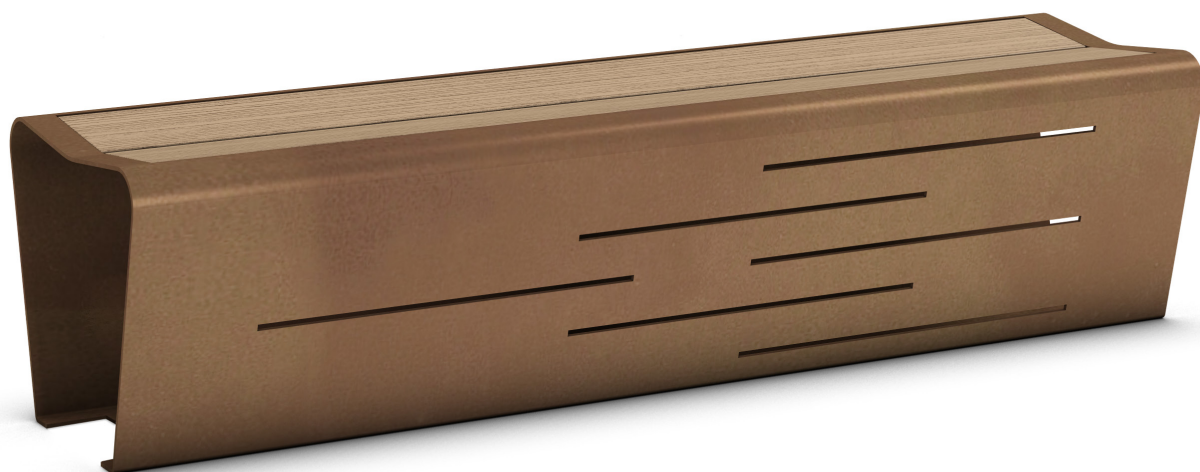


CODE: UL-PNC-020

Benches

MAC WOOD seat

 THE[®]
ITALIAN
LAB



Dimensions: L 1800, W 470, H 450 mm

Weight: 80.4 Kg

The MAC WOOD seat is made of three 40/10 thick steel sheets, laser cut and welded together. Two of them have a 50 mm radial pattern.

The seat is made with slats of exotic wood treated with natural waterproof oils.

There are six decorative openings on the seat. The base plate is provided with 4x10 mm holes for ground fixing with suitable bolts (not supplied).

