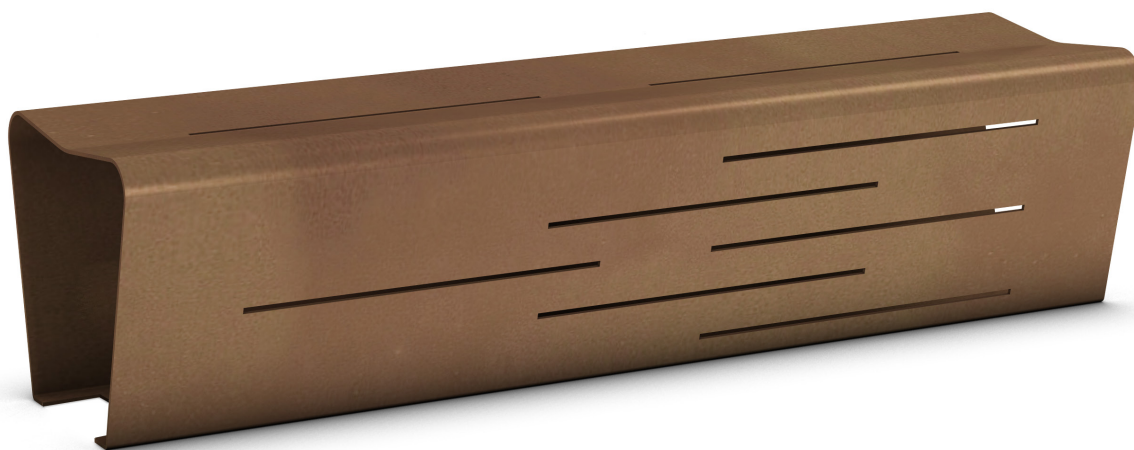


CODE: UL-PNC-016

# Benches

**5** THE<sup>®</sup>  
ITALIAN  
LAB

MAC seat



**Dimensions:** L 1800, W 470, H 450 mm

**Weight:** 80.4 Kg

The MAC seat is made of three 40/10 thick steel sheets, laser cut and welded together. Two of them have a 50-mm radial pattern.

On the seat there are two openings to drain rainwater.

There are six decorative openings on the seat. The base plate is provided with 4x10 mm holes for ground fixing with suitable bolts (not supplied).

