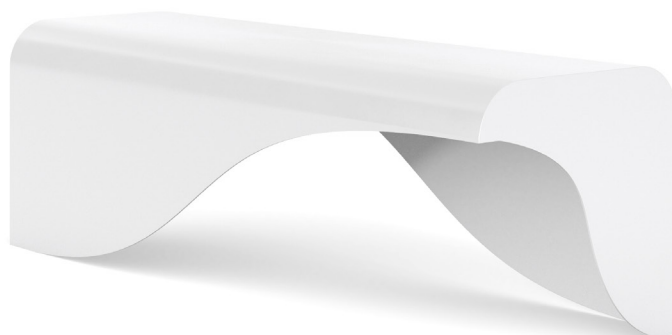
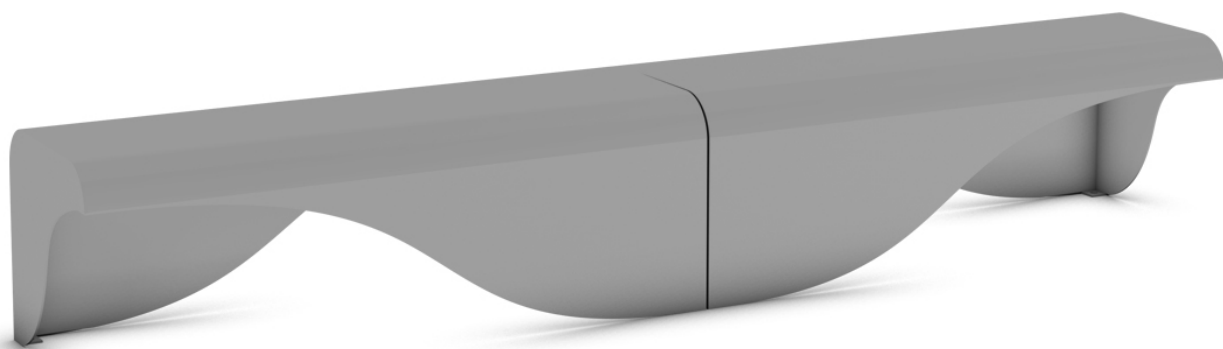


CODE SX: UL-PNC-027 CODE DX: UL-PNC-028

Benches

ONDA seat

 THE[®]
ITALIAN
LAB



Dimensioni: L 1500, W 515, H 500 mm

The ONDA seat, made of steel sheet. Thickness 50/10, consists of two symmetrical steel sheets bended to form a wave. On the outer parts of the bench solid reinforcing plates are welded. On the base there are 2 plates with 1-10 mm hole for ground attachment with appropriate bolts (not provided). The sheets are then cold galvanized and polyester powder coated.

