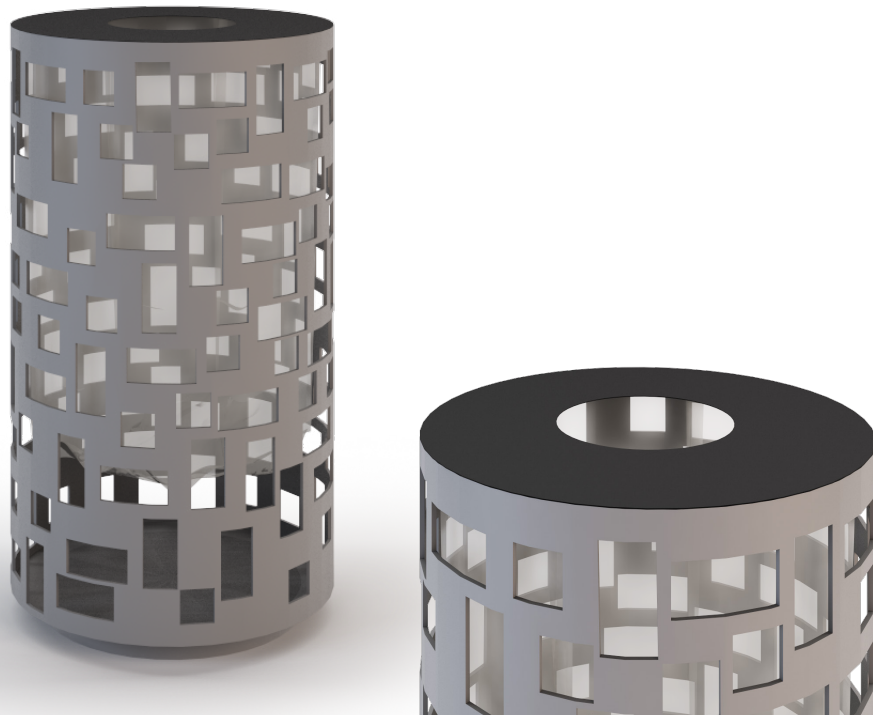


CODE: UL-CST-0211

# Litter bins

## Litter bin PIXEL 1



**5** THE<sup>®</sup>  
ITALIAN  
LAB

**Dimensions (mm):** Ø 500, H900  
**Capacity:** 100LT

The litter bin mod. PIXEL is made of 15/10 thick zinc-coated and polyester powder coated steel sheet. On the body there are laser cut incisions of variable-sized square / rectangular geometric shapes . The inner bin is made of zinc-coated steel sheet, supplied with two handles and an elastic to fix the plastic bag.

The lid of the PIXEL bin is made of 40/10 thick cold galvanized and polyester powder coated steel: it is fixed to the structure with a solid 30/10 thick three wings hinge.

The base is raised of 40 mm. this feature makes cleaning easier and the filth at the

base of the bin is less visible. The base it is pre-perforated for ground fixing with suitable bolts (not supplied);

**Optional:**

- Lock with triangular key
- rain cover
- ashtray mod. ASH BIN

