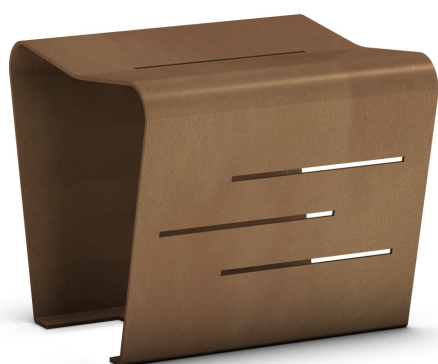


CODE A: UL-PNC-017 CODE B: UL-PNC-018

# Benches

**THE**<sup>®</sup>  
ITALIAN  
LAB

MAC chair



A



B

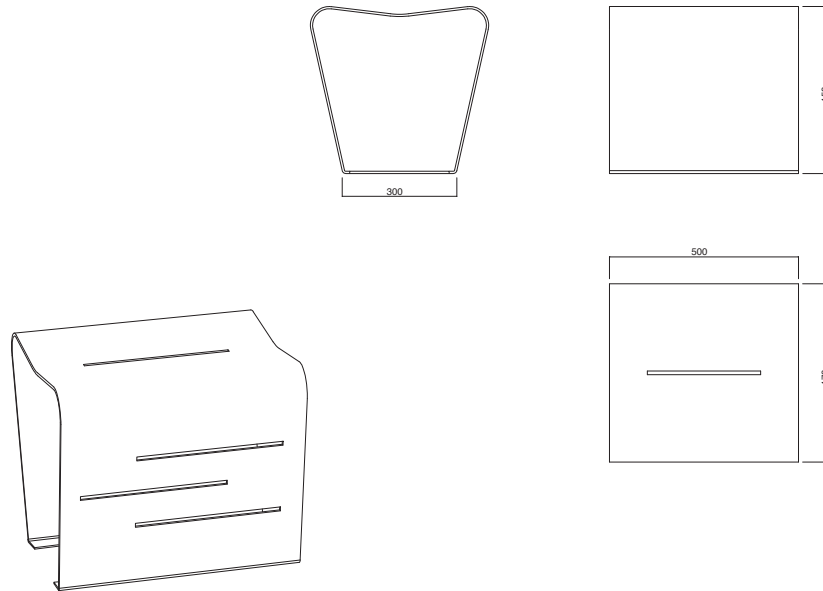
## Dimensions and Weight:

A) L 500, W 470, H 450 mm  
Weight: 23.1 Kg

B) L 500, W 590, H seat 450, Tot. H 780 mm  
Weight: 36.4 Kg

The MAC chair is made of three 40/10 thick steel sheets, laser cut and welded together. Two of them have a 50-mm radial pattern. On the seat there is one opening to drain rainwater. There are three decorative openings on the backrest and seat. The base plate is provided with 4x10 mm holes for ground fixing with suitable bolts (not supplied).

A



B

