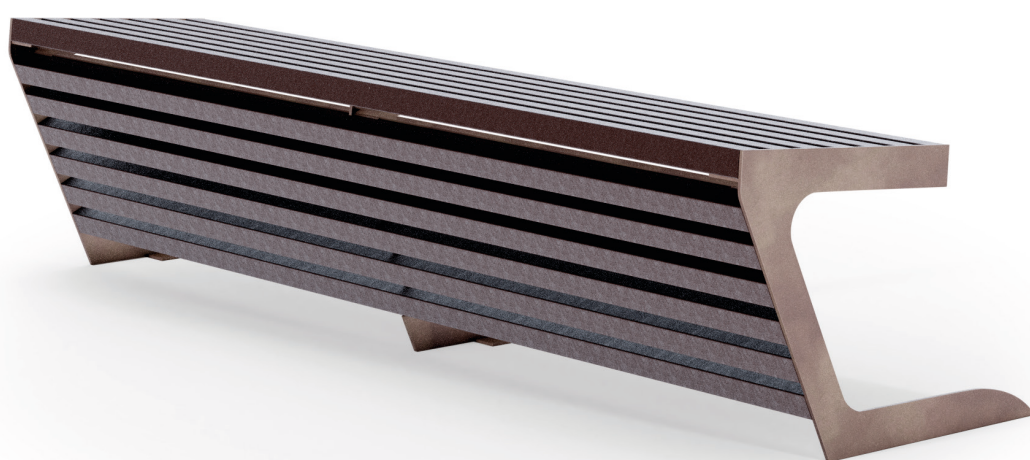


CODE: UL-PNC-002-PR

Benches

WOODY seat
RECY

THE[®]
ITALIAN
LAB



Dimensions: L 1800, W 600, H seat 450 mm
Weight: 36.1 Kg

The structure of the WOODY seat is composed of nr. 3 sturdy steel shoulders, th. 10 mm (or AISI 304 stainless steel), laser-shaped to be able to position the 19 recycled plastic slats 40x40 mm. On the basis of the 3 robust shoulders are made n. 6 holes for fixing to the ground using special dowels (not supplied). All the steel elements are subsequently cold galvanized and powder coated with PP.

